

MARINE SENSOR SERVICE VISITS & WAVE BUOY DEPLOYMENT

BLACKWATER ESTUARY, ESSEX

NOTICE TO MARINERS: 15TH – 24TH JANUARY 2020

Partrac Ltd. is scheduled to carry out service visits for marine sensors at 5 sites (M1-M5), and the deployment of a wave buoy at 1 site (M6), in the Blackwater Estuary, Essex, over a period of 10 days between 15th and 24th January 2020, weather permitting.

Sites M1-M5 are marked by a guard buoy with an amber navigation lantern set to flash 5 times at 1Hz every 20 seconds (Figure 1). The wave buoy to be deployed at site M6 is shown in Figure 2, and its navigation light will also flash 5 times at 1Hz every 20 seconds. The coordinates of sites M1-M6 are provided in Table 1 in WGS84, and the chart locations are shown in Figure 3.

Partrac will be using the Jean T workboat operated by Port Flair from Bradwell Marina (Figure 4). The sensors will be deployed for a period of up to 1 year, and all equipment will be removed at the end of the study.

Table 1: Positions for the five marine sensor (M1-M5) and one wave buoy (M6) deployments in WGS84 Decimal Degrees and Degrees Decimal Minutes

Site	Lat (DDM)	Long (DDM)	Lat (DD)	Long (DD)
M1	51° 43.542'N	000° 49.662'E	51.725700°	0.827700°
M2	51° 44.796'N	000° 53.514'E	51.746600°	0.891900°
M3	51° 45.108'N	000° 58.080'E	51.751800°	0.968000°
M4	51° 43.932'N	001° 07.218'E	51.732200°	1.120300°
M5	51° 42.558'N	001° 03.222'E	51.709300°	1.053700°
M6	51° 43.914'N	001° 07.128'E	51.731900°	1.118800°

For further information please contact:

Kevin Ransom – Partrac Ltd. M: 07810 055685 E: kransom@partrac.com

Port Flair Ltd., Bradwell Marina, Waterside Road, Bradwell-on-Sea, CM0 7RB. M: 01621 776235



Figure 1: Guard Buoy at sites M1-M5



Figure 2: Wave buoy at site M6

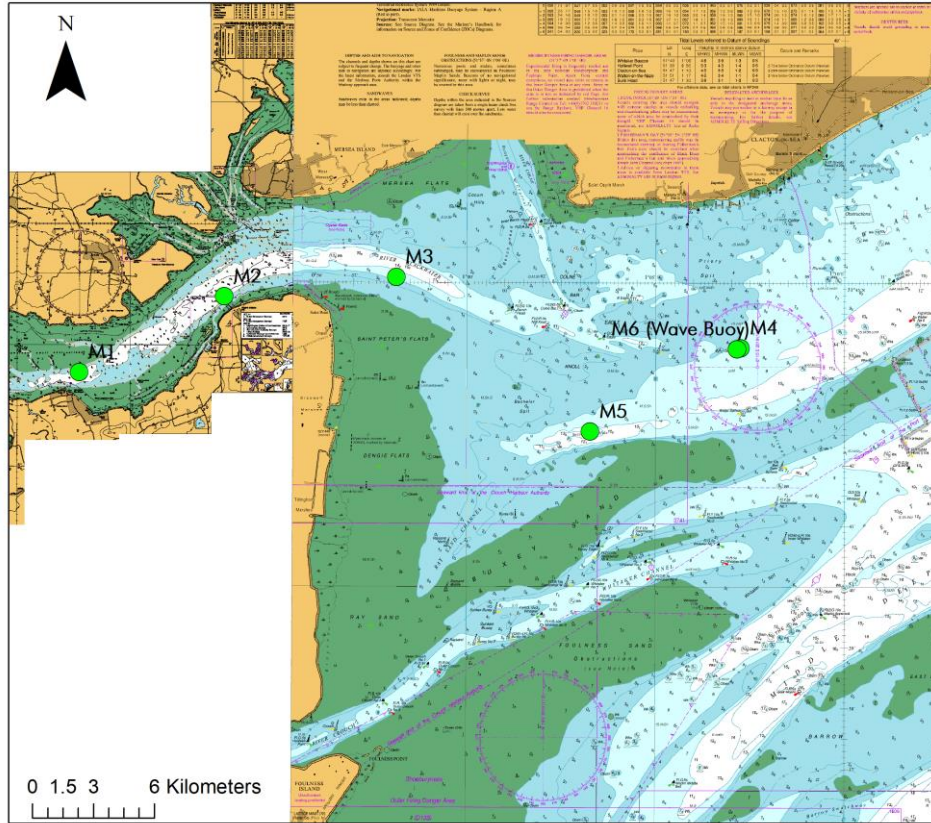


Figure 3: Marine sensor (M1-M5) and wave buoy (M6) deployment locations in the Blackwater Estuary



Figure 4: Jean T workboat