

INTERTIDAL MARINE SENSOR SERVICE VISITS

BLACKWATER ESTUARY, ESSEX

NOTICE TO MARINERS: 16TH - 19TH JANUARY 2020

Partrac Ltd. is scheduled to service marine sensors in the Blackwater Estuary, Essex, at seven sites from 16th to 19th January 2020, weather permitting.

Each of the sites will be accessed using two Coastal-Pro MACV light hovercraft operated by Coastal Transit Services (Figure 1). Permission to operate the hovercraft within prescribed environmental conditions was granted by Natural England on 14th December 2018.

The site coordinates in WGS84 and OSGB36 are provided in Table 1, and the chart locations are shown in Figure 2. The sensors are deployed for a period of up to one year, and all equipment will be removed at the end of the study.

Table 1: Positions for the 7 marine sensor deployments in OSGB36, WGS84 Decimal Degrees and WGS84 Degrees Decimal Minutes

Site	Easting	Northing	Lat (DD)	Long (DD)	Lat (DDM)	Long (DDM)
T1	593848	207707	51.7345 N	0.8059 E	51° 44.072' N	0° 48.354' E
T2	597758	207119	51.7279 N	0.8621 E	51° 43.674' N	0° 51.727' E
T3	603305	212290	51.7723 N	0.9453 E	51° 46.341' N	0° 56.720' E
T4	609256	212992	51.7765 N	1.0319 E	51° 46.588' N	1° 01.913' E
T5	604773	208617	51.7388 N	0.9644 E	51° 44.330' N	0° 57.865' E
T6	605599	205427	51.7099 N	0.9745 E	51° 42.593' N	0° 58.469' E
T7	605760	202536	51.6839 N	0.9751 E	51° 41.032' N	0° 58.507' E

The hovercraft will be launched from Bradwell Waterside approx. 1.5 hours before low water with a transit time to site of 15 – 30 minutes.

For further information please contact:

Kevin Ransom – Partrac Ltd. M: 07810 055685 E: kransom@partrac.com

Coastal Transit Services: M: 07584 996552



Figure 1: Coastal Transit Services Coastal-Pro MCAV Hovercraft

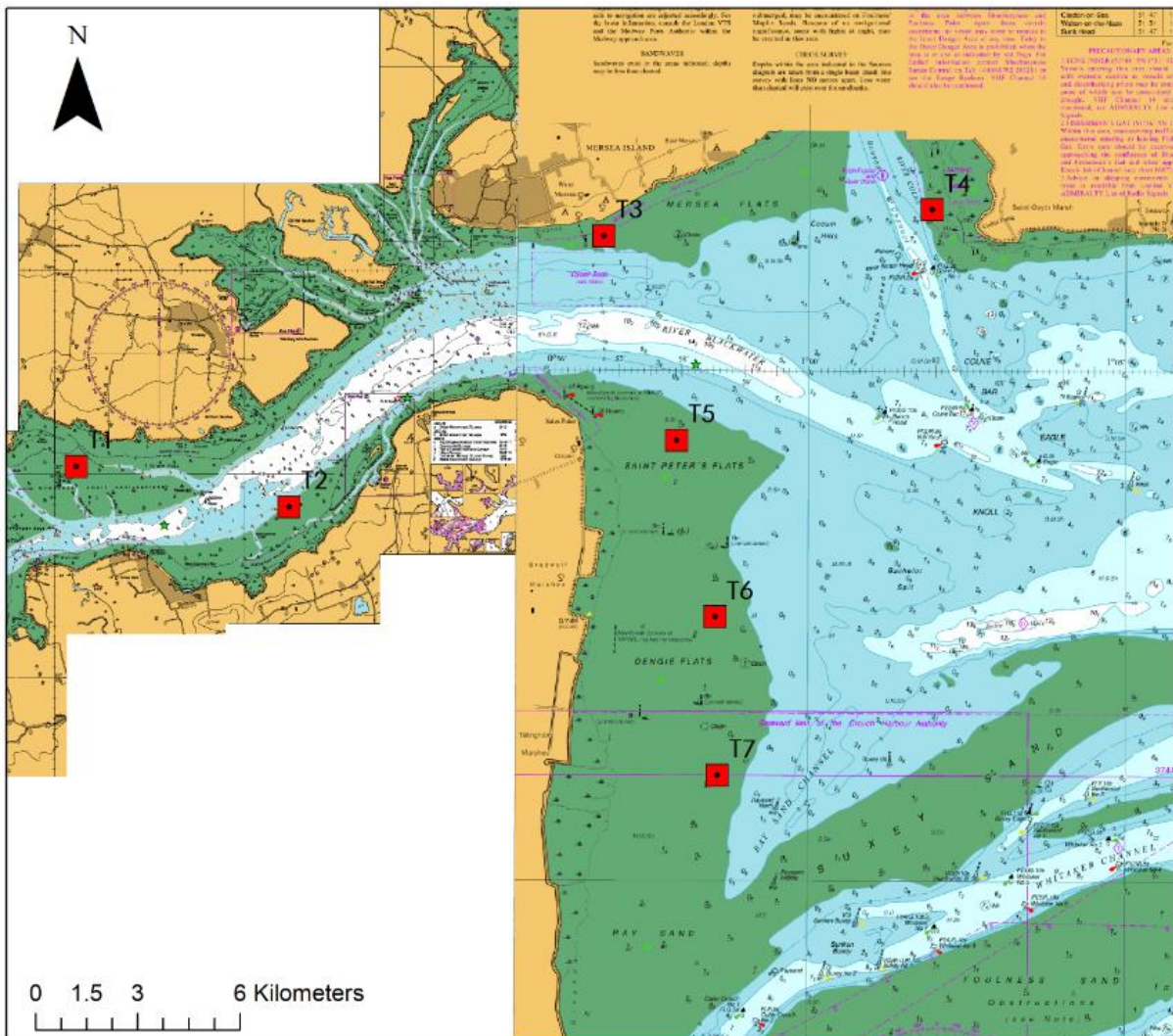


Figure 2: Intertidal marine sensor deployment locations in the Blackwater Estuary