

Brightlingsea Harbour Foot Ferry & Boat Trips

Wivenhoe Lunch Cruise

Starting from Brightlingsea Harbour, the ferry journey along the picturesque River Colne to Wivenhoe is very rewarding, so sit back and enjoy the stunning panoramic scenery on your way to the quaint riverside village of Wivenhoe. With its narrow streets and quaint buildings, Wivenhoe makes a great day out. It has been home to many famous people over the years, including 'Miss Marple'!

Included in the price is the return boat trip and main meal at the 300yr old Black Buoy Inn, which is steeped in maritime history. Originally named the Black Boy (after Charles II, the 17th century king who sported black hair and a dark complexion), the pub dates from at least 1712. The Black Buoy became a meeting place for a range of maritime folk, from sea captains and shipbuilders to smugglers and customs men, perhaps even pirates!

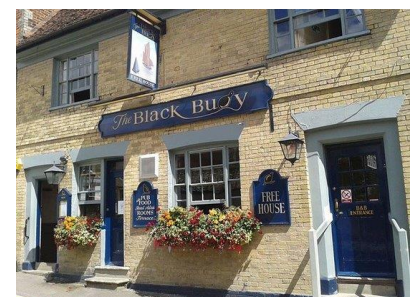


<u>August Dates</u> 2021	<u>Depart B'sea</u> <u>Town Jetty</u>	<u>Depart Wiv</u>
Saturday 7th	11.30	14.15
Sunday 8th	11.30	14.15
Monday 9th	12.00	14.45
Tuesday 10th	13.00	15.45
Wednesday 11th	13.00	15.45
Thursday 12th	13.15	16.00
Monday 16 th (evening)	17.00	19.45
Sunday 22nd	11.30	14.15
Monday 23rd	12.00	14.45
Tuesday 24th	12.45	15.30
Wednesday 25th	13.15	16.00

Adult £26.00
Child (12 or under) £22.00
 Choose from the following selection of meals;
*Ham, Egg & Chips *NA Sunday*
Burger & Chips NA Sunday*
Fish & Chips
Scampi & Chips
A vegetarian dish
Sunday Roast (only on Sunday)

Please contact Brightlingsea Harbour Office on 01206 302200 or mail@brightlingseaharbour.org to book.

Dates & Times subject to change



Follow us on

