



Brightlingsea
Harbour
Commissioners

AGENDA

1. 2019/20 Finance Report
2. Using Sediment As a Resource (USAR) Project
3. Harbour Developments/Plans :

Financial Report 2019/20

Brightlingsea Harbour Commissioners

Income Statement

for the year ended 31 March 2020

	Notes	2020 £	2019 £
TURNOVER		760,474	557,327
Cost of sales		<u>358,044</u>	<u>245,642</u>
GROSS PROFIT		402,430	311,685
Administrative expenses		<u>532,089</u>	<u>521,890</u>
		(129,659)	(210,205)
Other operating income		<u>143,601</u>	<u>131,653</u>
OPERATING PROFIT/(LOSS)	4	13,942	(78,552)
Interest receivable and similar income		<u>5,278</u>	<u>5,138</u>
PROFIT/(LOSS) BEFORE TAXATION		19,220	(73,414)
Tax on profit/(loss)		<u>-</u>	<u>(11,886)</u>
PROFIT/(LOSS) FOR THE FINANCIAL YEAR		<u>19,220</u>	<u>(61,528)</u>

Brightlingsea Harbour Commissioners

**Balance Sheet
31 March 2020**

	Notes	2020 £	£	2019 £	£
FIXED ASSETS					
Tangible assets	5		363,861		385,995
CURRENT ASSETS					
Stocks		11,477		5,491	
Debtors	6	320,207		193,517	
Cash at bank and in hand		<u>557,840</u>		<u>614,352</u>	
		889,524		813,360	
CREDITORS					
Amounts falling due within one year	7	<u>408,932</u>		<u>374,122</u>	
NET CURRENT ASSETS			<u>480,592</u>		<u>439,238</u>
TOTAL ASSETS LESS CURRENT LIABILITIES			<u>844,453</u>		<u>825,233</u>
RESERVES					
Other reserves			300,000		300,000
Retained earnings			<u>544,453</u>		<u>525,233</u>
			<u>844,453</u>		<u>825,233</u>

The financial statements have been prepared in accordance with the provisions applicable to companies subject to the small companies regime.

The financial statements were approved by the Board of Commissioners and authorised for issue on and were signed by:

.....
Chairman

Using sediment as a resource

Brightlingsea Harbour

Image: courtesy of Brightlingsea Harbour

USAR - Using Sediment As a Resource

Using Sediment As a Resource

Dredging and Restoration Sites 2016-2020



Using Sediment As a Resource

Using Sediment As a Resource

Site works 2020



Using Sediment As a Resource

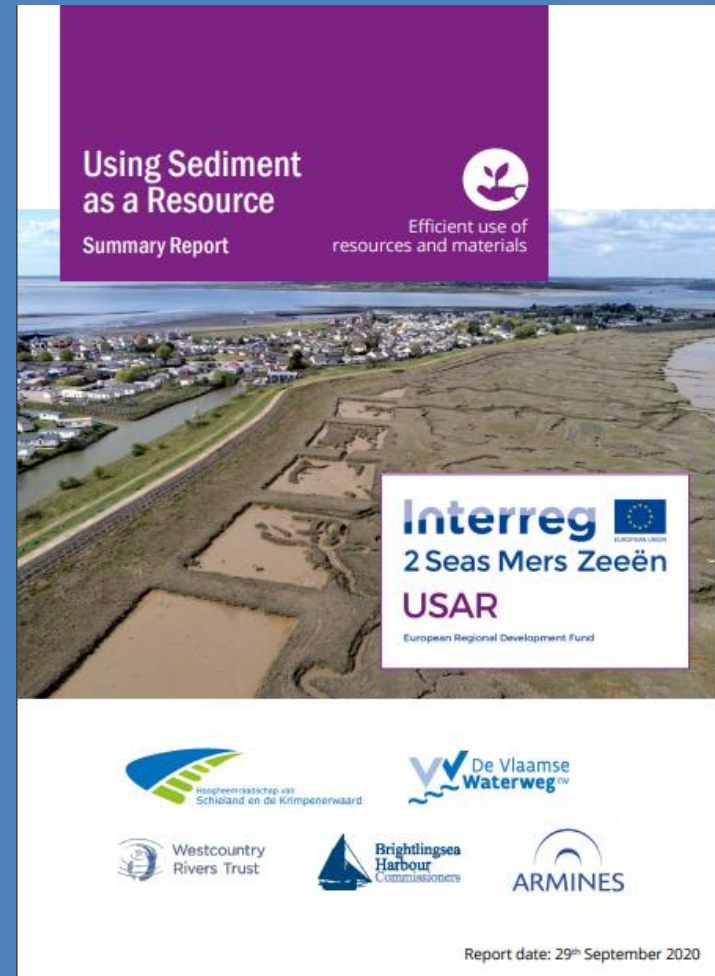
Site works 2020



Using Sediment As a Resource

End conference

Platform Baggernet Webinar



Using Sediment As a Resource

Planned site visits



“...The project creates a positive impact on flood risk management, ecology and reuse of waste.”
Environment Agency representative

St Osyth Pits (before works, May 2017)



St Osyth Pits (after works, Mar 2018)



St Osyth Pits (after works and one season of consolidation, Oct 2018)



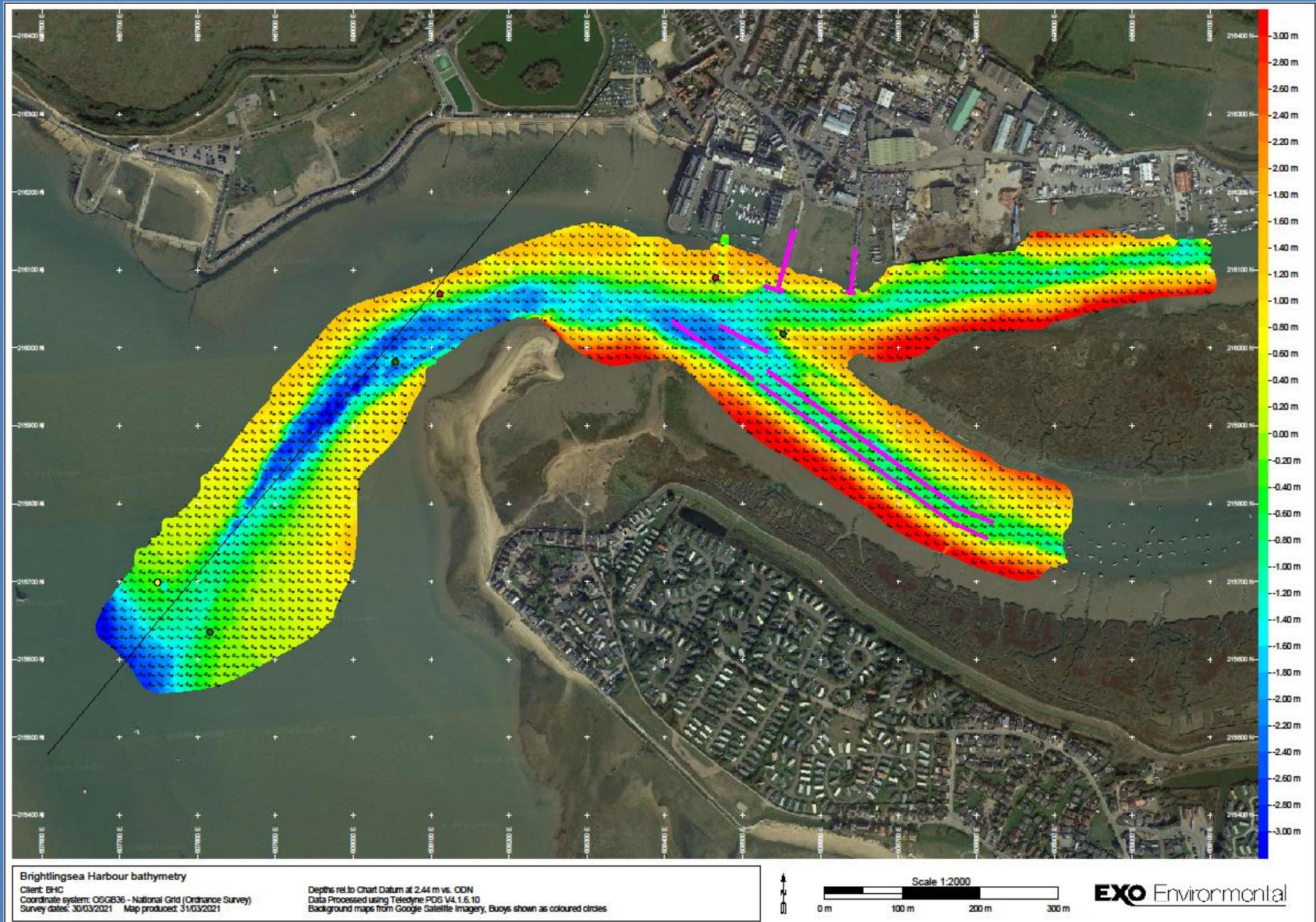
St Osyth Pits in 2020



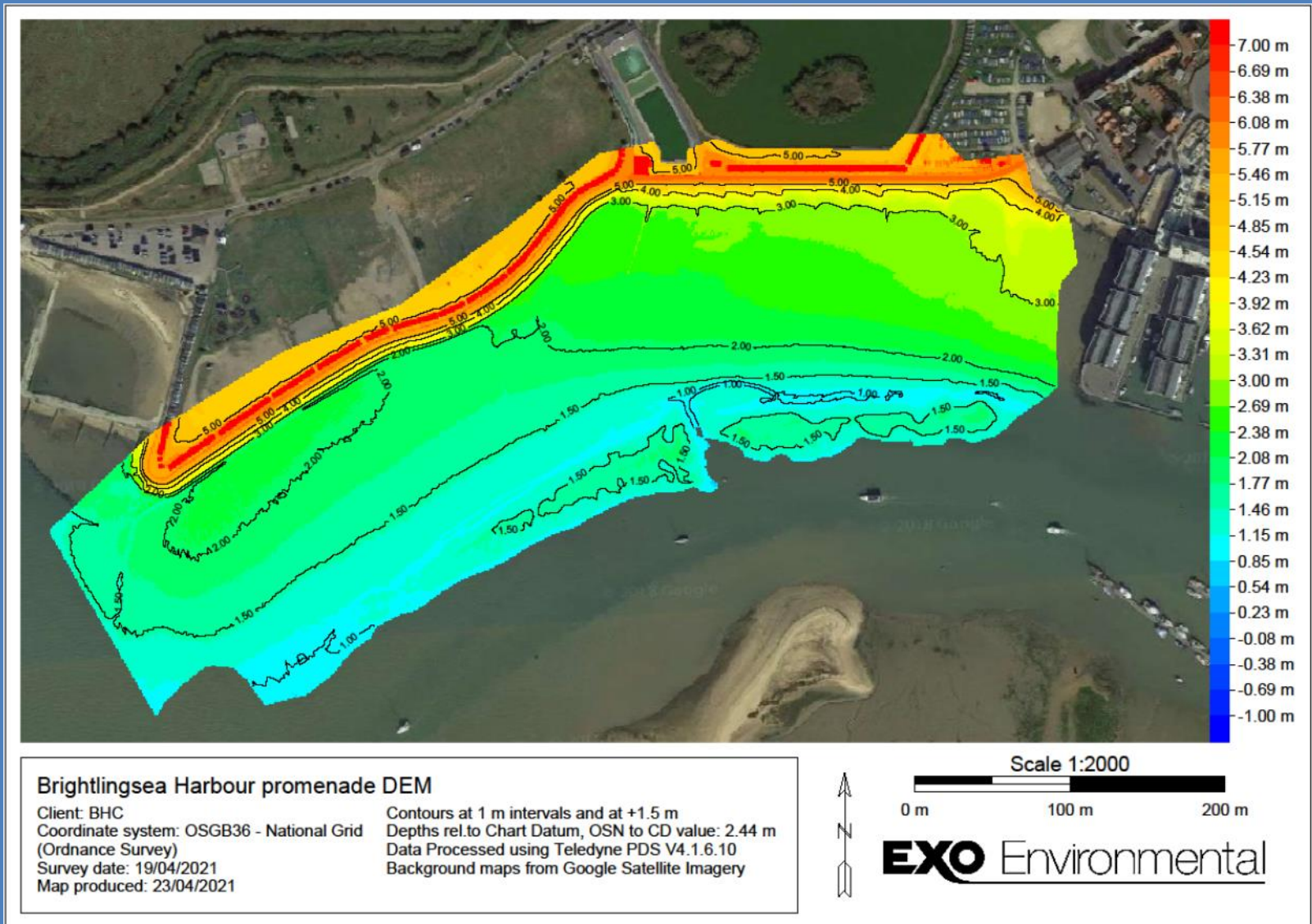
St Osyth pits in 2020



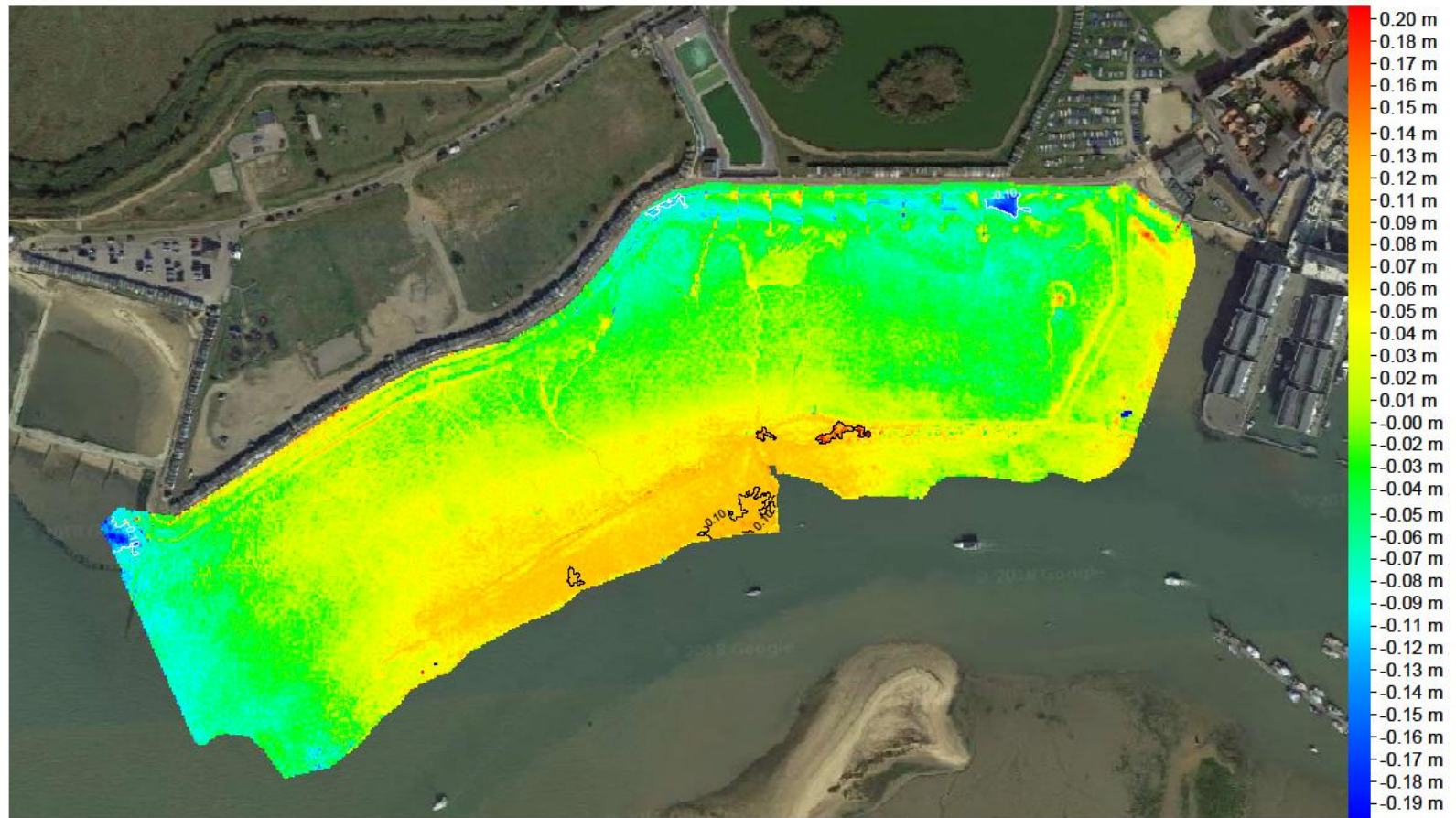
Whole harbour Bathymetry Mar 2021



Promenade mudflat April '21



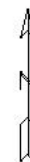
Promenade mudflat difference April '21 to Sept '20



Brightlingsea promenade mudflat, difference Sep '20 to Apr '21

Client: BHC
Coordinate system: OSGB36 - National Grid
(Ordnance Survey)
Survey dates: 08/09/2020 and 19/04/2021
Map produced: 23/04/2021

Contours at 10 cm intervals
Depths rel.to September 2020 levels
Data Processed using Teledyne PDS V4.1.6.10
Background maps from Google Satellite Imagery



Scale 1:2000
0 m 100 m 200 m

EXO Environmental

Harbour Development /Plans

STAKEHOLDERS

Port Users.

Brightlingsea community of 10000 people,

Local businesses,

Port employees,

Interest groups.

Councils; Town, District and County.

The National economy.

The interests of all Stakeholders are recognised by the Commissioners and guide their decisions.

Public Meetings

Approximately 2 per year Chaired by the Harbour with Published accounts.

Commercial Group. (As required not Harbour led)

Leisure and Community Group. (As required not Harbour led)

CAPITAL SPENDING

Equipment- Plan until 2050 £1,362,819.50

Replace pilot workboat.

Refurbish offices.

Wreck house improvements.

CCTV.

Engine Replacements.

Pontoon Repairs.

Dredger / Marina.

Fuel Barge Regular servicing plus refurb.

Website/IT.

We must transfer at least £63000 to reserves annually

9579

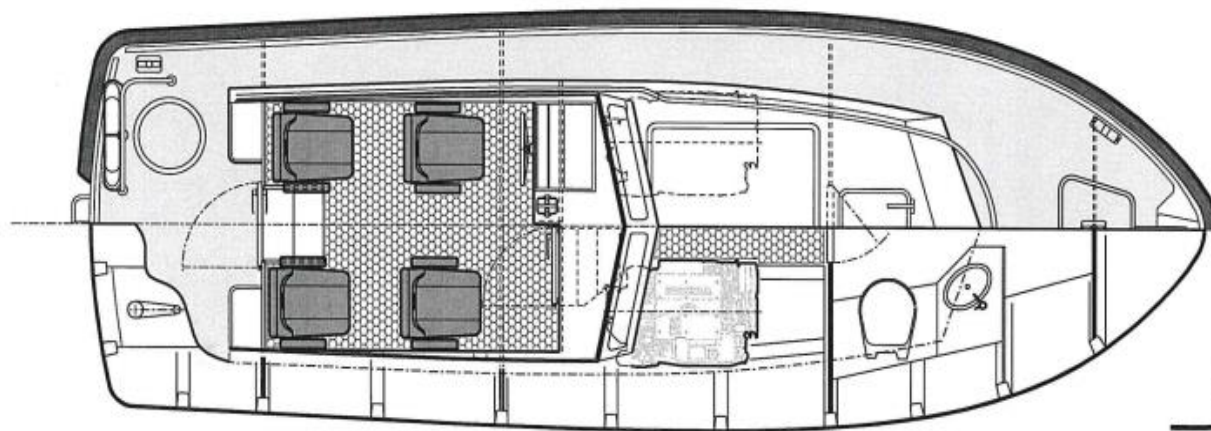
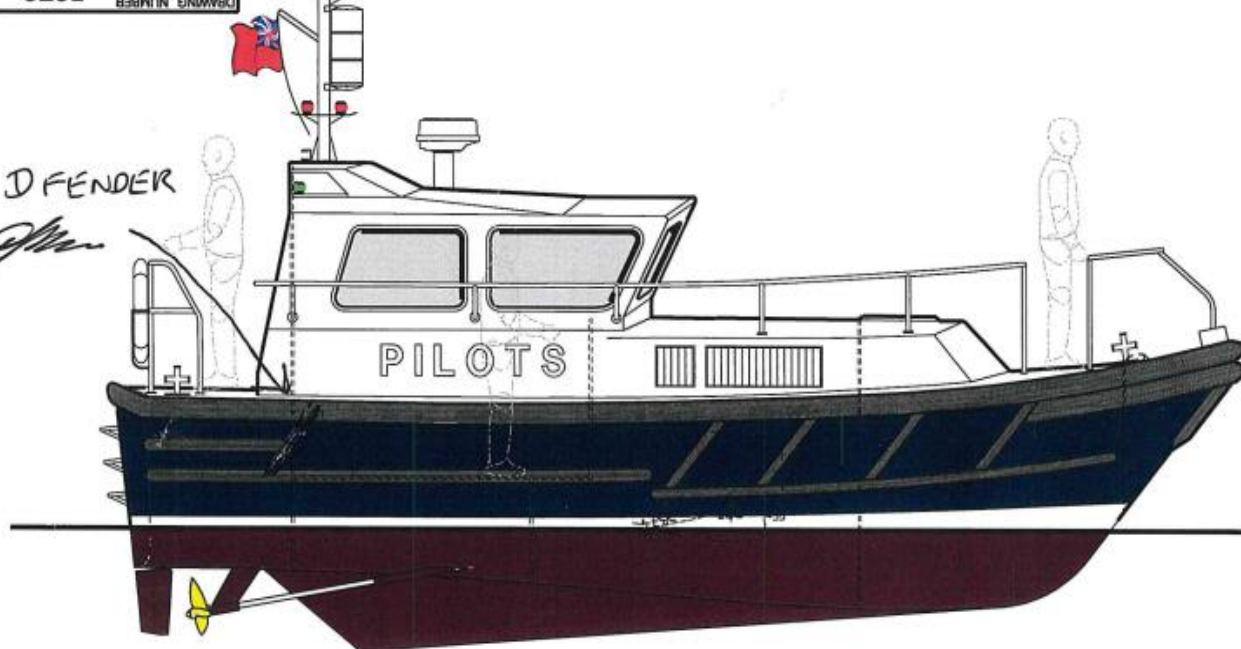
DRAWING NUMBER

D FENDER

John

21.4.21

J. THOMAS



TT BOAT DESIGNS LTD

SEAWARD - ISLE OF WIGHT - ENGLAND

PHONE +44 (0)1903 710107 Email: info@ttboatdesigns.co.uk

THE BOAT DEVELOPMENT COMPANY LTD

COWES - ISLE OF WIGHT - ENGLAND - PO31 7AD

PHONE +44 (0)1903 390218 WWW.SEAWARDBOAT.COM

DRAWN BY
AJR/BJDIMENSIONS IN
mm

TITLE

SEAWARD 29 PILOT BOAT
GENERAL ARRANGEMENT

SCALE

1:25

DRAWING NUMBER

5676

ISSUE	DATE	MODIFICATIONS
2	20.4.21	SCREENS AND TOILET
1	3.2.21	

ACTIVITIES

Leisure Moorings Waiting lists.

Marina Showers/Toilets, Superfast WiFi, Dredged.

Taxi Popular still, cash price £1.50 frozen and Children still free.

Visitors Up receipts 2% on last year inflation increase only.

Ferry No increase in price forecast, Charter Ferry successful and will develop through this year.

Wharf and commercial activity Ships 42 from 46, Slight reduction on Wharf ,10% overall increase more windfarm traffic.

Colne Navigation Trinity House: “These are some of the best in the UK and the best we’ve ever seen them here.”

Schools Engagement Schools week ,will happen with a slightly subdued programme.

Charitable Causes RNLI, Brightlingsea in Bloom, 1st Responders, Regatta, Regatta Fireworks, CYC Fireworks, Christmas trees, Little Terns habitat work, St Helena’s hospice, Shipwrecked mariners society, Porridge and pens.

ACTIVITIES

Staff Training General

Oil Spill response Exercises MCA

Trg Permanent Cadre : x 12;

2 x Conflict resolution

3 x Equal Opportunities

P5 Oil Spill Response

2 x P2 Oil Spill Response

2 x Level 2 RYA

1 x Rescue Boat

3 x VHF Radio Certificate

2 x Pilotage Training

1 x New Pilot PEC

3 x Sea Survival

2 x Apprentices

1 x BMET

5 x Abrasive Wheels

1 x Navigation

Trg Non Permanent Cadre : x 26;

2 x Advanced Powerboat preparation

Pilot Boat Operations

1 x Advanced Powerboat

1 x PPR Course

1 x Sea Survival

2 x Kickstart

1 x Navigation

Maintenance Dredging

Main Channel

- The deepest part is approx 10m west of leading line with depths above 1m all way down, we will correct this over the year.
- The Town pontoon to Oliver's Wharf and Fuel Barge, maintaining a depth of 0.75m below CD, we continued to achieve and will run down again this year.
- Area of the Fuel Barge, maintaining a depth of 0.75m below CD, once again achieved.

Leisure Harbour

- The pontoons and some moorings in the South channel dredged to a depth of 0.75m below CD.

Leisure Marina

- The Marina Depth has been increased Feb/Mar 20 to between 1 - 2 m below cill, mud will always be kept in suspension. Regular dredging takes place with a more comprehensive dredge every few years.

This Year

- Increase Colne connection Charters, evening cruises, digitise booking system.
- We want to help people see us as we are;

Video

- What we do.
- What does the inside of a boat look like.

Collaboration

- Work more closely with local businesses.
- Work more closely with the Council.
- Working with Holiday Parks

Social media

- Website development.
- Facebook – 2.6k and 2.6k on both sites.

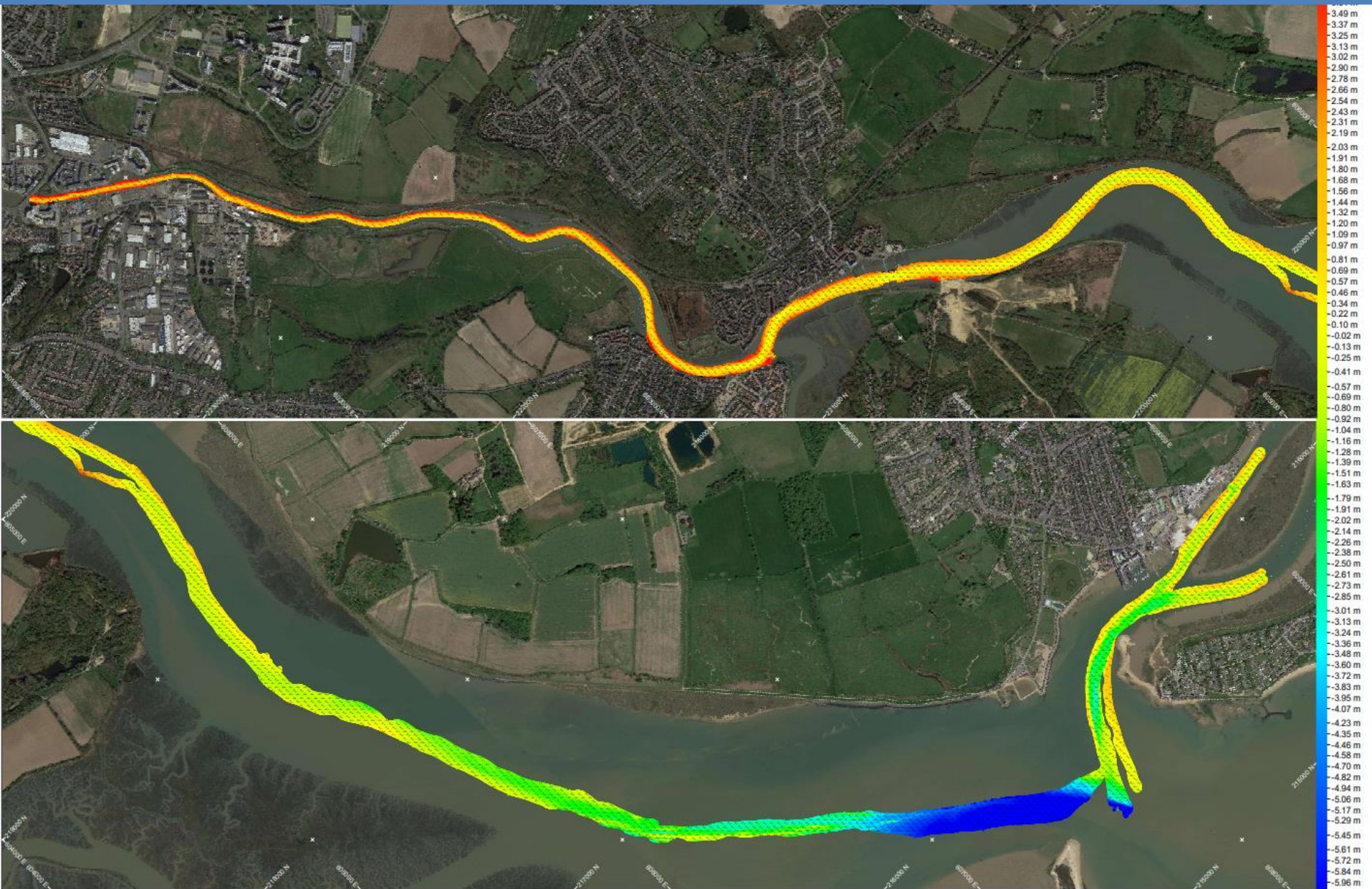
- Environmentally better

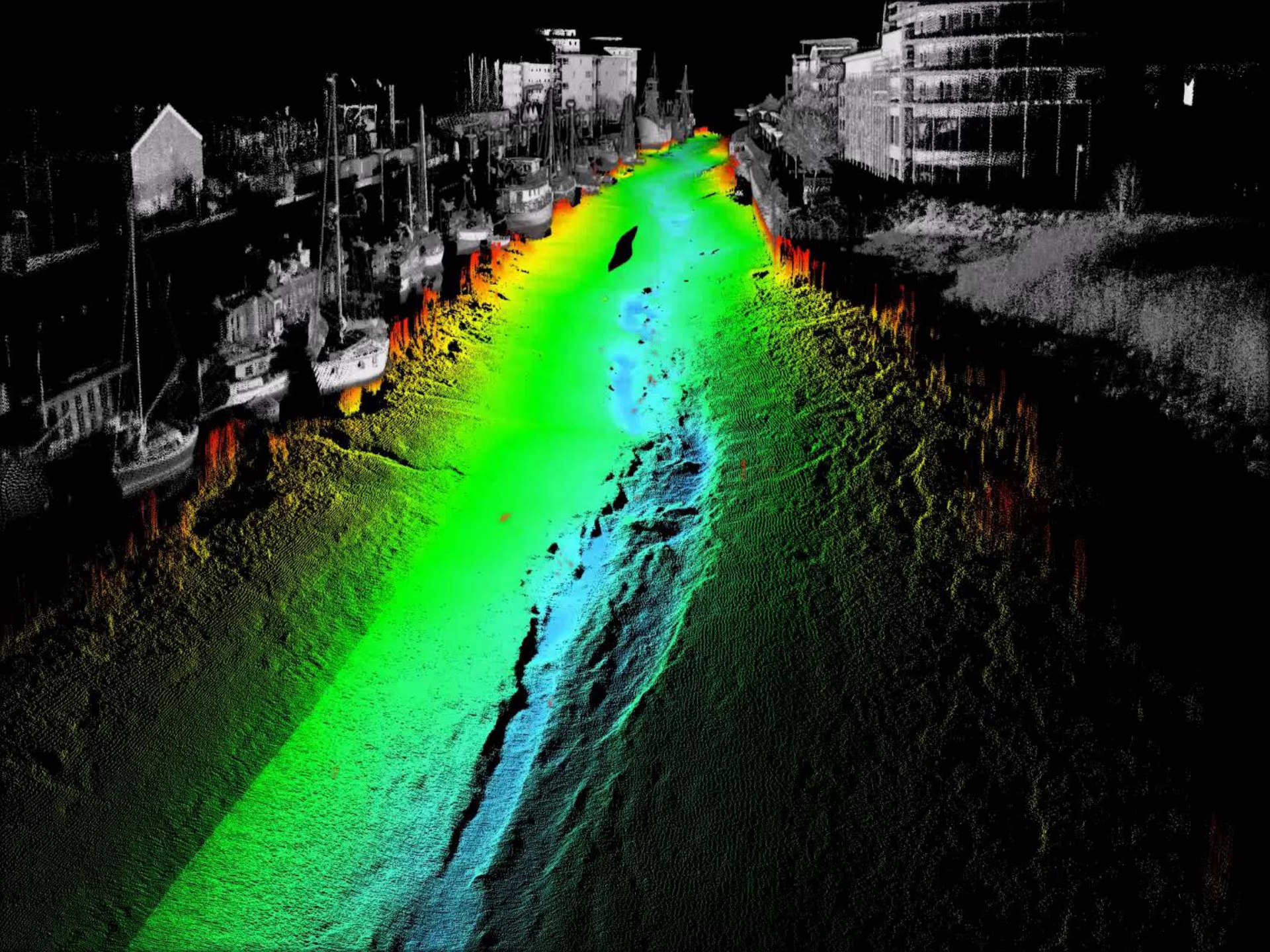
Policy, Living it, setting the example.

- Prepare future staff

Apprenticeship

Bathymetry working with CBC





The Future

One-year objectives:

- To finalise with Brightlingsea Town Council an updated Licence/Lease agreement regarding managing and maintaining the Boat Park, Hard and Town Jetty

Three-year objectives:

- To establish a permanent ferry landing stage at Point Clear
- To establish a designated parking area for short-term use by mooring holders and visitors
- To establish access to power and water for certain harbour moorings, using modern technologies wherever possible.

Capital Equipment Replacement

Strategy endorsed, with aim to replace, as and when necessary, with more environmentally friendly equipment.

Posts on Hard

It was agreed that further consideration should be given to the environmental impact of current use and ways to mitigate this.